



COMMERCIAL SITE FOR SALE

22 Washington Street, Brainerd, MN 56401

C|C CLOSE CONVERSE
Commercial Real Estate | Business Brokerage

521 Charles Street, PO Box 327, Brainerd, MN 56401 | 218-828-3334 | www.closeconverse.com

Table of Contents

Page

3-4	Features
5	Floor Plan
6-11	Photos
12	Aerial Photo
13	Section Aerial
14	Section Map
15	Zoning Map
16	Traffic Counts
17	Location Map
18-19	Demographics
20	Thank You
21	Agency Disclosure
22	Contact

Close Converse: The above information has been obtained from the property owner or other sources that we deem reliable, however, neither the owner nor Close Converse guarantees the accuracy of such information. No part of this information may be reproduced, adapted, or transmitted without the prior written consent of Close Converse.

Commercial Site on High-Traffic Corner.

Exceptional opportunity to secure a highly visible, high-traffic corner lot along the busy Washington Street corridor in Brainerd. This premier commercial site offers outstanding exposure and accessibility—an ideal location for redevelopment or repositioning. The property currently features a former car dealership building with showroom space, offices, multiple shops with drive-in doors, and ample storage, providing immediate utility or a strong foundation for future development. Don't miss your chance to capitalize on one of Brainerd's most strategic commercial locations.



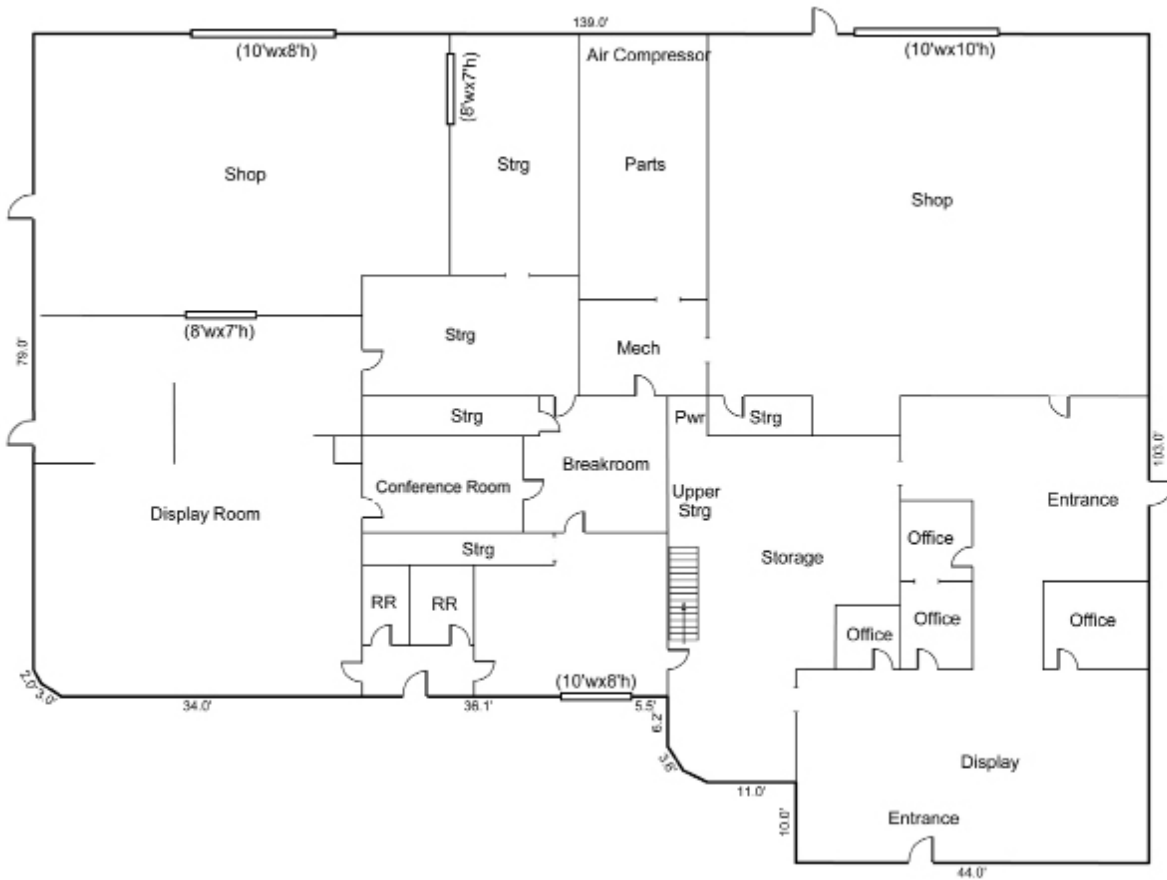
- Address:** 22 Washington Street (Hwy 210) Brainerd, MN 56401
- Directions:** From Hwy 210 (Washington Street) / Hwy 371 (S 6th Street) intersection in Brainerd - West on Washington Street 5 blocks - Property is the SW corner of Washington Street and N 1st Street
- Lot Size:** 0.68 Acres (29,871 sq. ft.)
- Lot Dimensions:** 206' x 145'
- Frontage:** 206' on Washington Street and 145' on N 1st Street
- Building Size:** 12,788 sq. ft.
- PRICE REDUCED:** ~~\$499,000~~ \$399,000
- 2025 Real Estate Taxes:** \$6,528
- Water & Sewer:** City
- Heating:** Boiler & Natural Gas Ceiling Heaters (Boiler System New in 2024)

Continued on next page.

Cooling:	Roof-Top Units
Electric:	200 Amp, Three Phase
Lighting:	Fluorescent
Year Built:	1936
Construction:	Concrete Block
Foundation:	Concrete Block
Roof:	Flat - Rubber Membrane
Exterior:	Stucco & Concrete Block
Ceiling Height:	Office Area: 8' Shops: 14'
Overhead Doors:	1 (10'W x 10'H) Exterior 2 (10'W x 8'H) Exterior 2 (8'W x 7'H) Interior
Bathrooms:	2
Floor Drains:	Yes (In Shops)
Parking:	35+ Paved Parking Spaces
Zoning:	CC - Commercial Corridor
PID#:	41251117
Legal Description:	Pt of Lot 1 desc; beg at NE cor of Lot 1 then S 145 ft then W 206 ft then N to N line of Lot 1 then E to POB, Auditors Plat of Unplatted Portions Sec
Neighboring Businesses:	Located close to downtown Brainerd, nearby businesses include Bohman Chiropractic, United Partnership Co., Harmony Massage, The Studio, Dairy Queen, Vapor North, Legend Outdoors, Greenheck Auto Glass, Hardees, Thrifty White Drug, Allegra, Brainerd Floral, Cenex, Brainerd Chamber, Ace Hardware, Caribbean Beach Tan, Brainerd Medical Supply, Walgreens plus numerous others.

Close Converse: The above information has been obtained from the property owner or other sources that we deem reliable, however, neither the owner nor Close Converse guarantees the accuracy of such information. No part of this information may be reproduced, adapted, or transmitted without the prior written consent of Close Converse.

Floor Plan



Close Converse: The above information has been obtained from the property owner or other sources that we deem reliable, however, neither the owner nor Close Converse guarantees the accuracy of such information. No part of this information may be reproduced, adapted, or transmitted without the prior written consent of Close Converse.



22 Washington Street, Brainerd, MN

Photos



Commercial Site



Commercial Site



Subject Building - North Side



Subject Building - West Side



Subject Building - South Side



Subject Building - South Side

Close Converse: The above information has been obtained from the property owner or other sources that we deem reliable, however, neither the owner nor Close Converse guarantees the accuracy of such information. No part of this information may be reproduced, adapted, or transmitted without the prior written consent of Close Converse.

521 Charles Street, PO Box 327, Brainerd, MN 56401 | 218-828-3334 | www.closeconverse.com



West Display Room



West Display Room



Office



Office



Office



West Work Area

Close Converse: The above information has been obtained from the property owner or other sources that we deem reliable, however, neither the owner nor Close Converse guarantees the accuracy of such information. No part of this information may be reproduced, adapted, or transmitted without the prior written consent of Close Converse.



West Work Area



West Storage



West Storage



Breakroom



Breakroom



Conference Room

Close Converse: The above information has been obtained from the property owner or other sources that we deem reliable, however, neither the owner nor Close Converse guarantees the accuracy of such information. No part of this information may be reproduced, adapted, or transmitted without the prior written consent of Close Converse.



North Drive-In Door Area



North Drive-In Door Area



North Entrance



Restroom



East Display Room



East Display Room

Close Converse: The above information has been obtained from the property owner or other sources that we deem reliable, however, neither the owner nor Close Converse guarantees the accuracy of such information. No part of this information may be reproduced, adapted, or transmitted without the prior written consent of Close Converse.



East Display Room



East Display Room



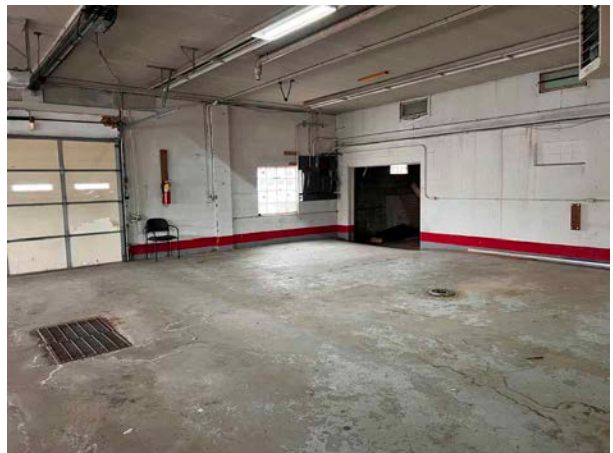
East Display Room



Central Storage Area



East Shop Space



East Shop Space

Close Converse: The above information has been obtained from the property owner or other sources that we deem reliable, however, neither the owner nor Close Converse guarantees the accuracy of such information. No part of this information may be reproduced, adapted, or transmitted without the prior written consent of Close Converse.



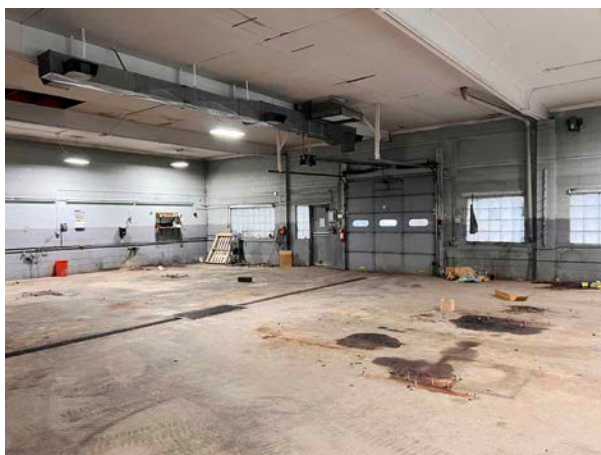
South Storage Area



South Storage Area



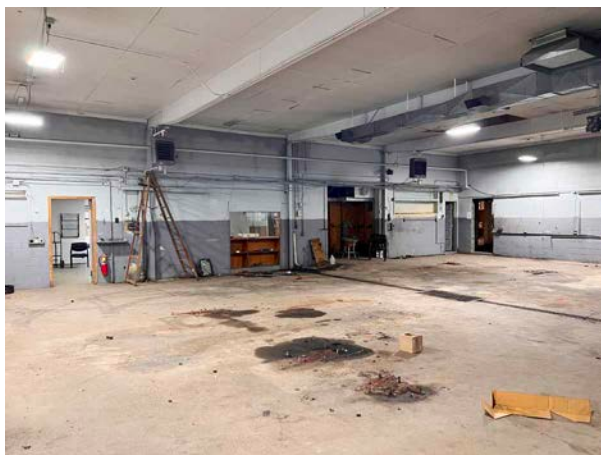
Parts Room



West Shop Space



West Shop Space



West Shop Space

Close Converse: The above information has been obtained from the property owner or other sources that we deem reliable, however, neither the owner nor Close Converse guarantees the accuracy of such information. No part of this information may be reproduced, adapted, or transmitted without the prior written consent of Close Converse.

22 Washington Street, Brainerd, MN

Aerial Photo

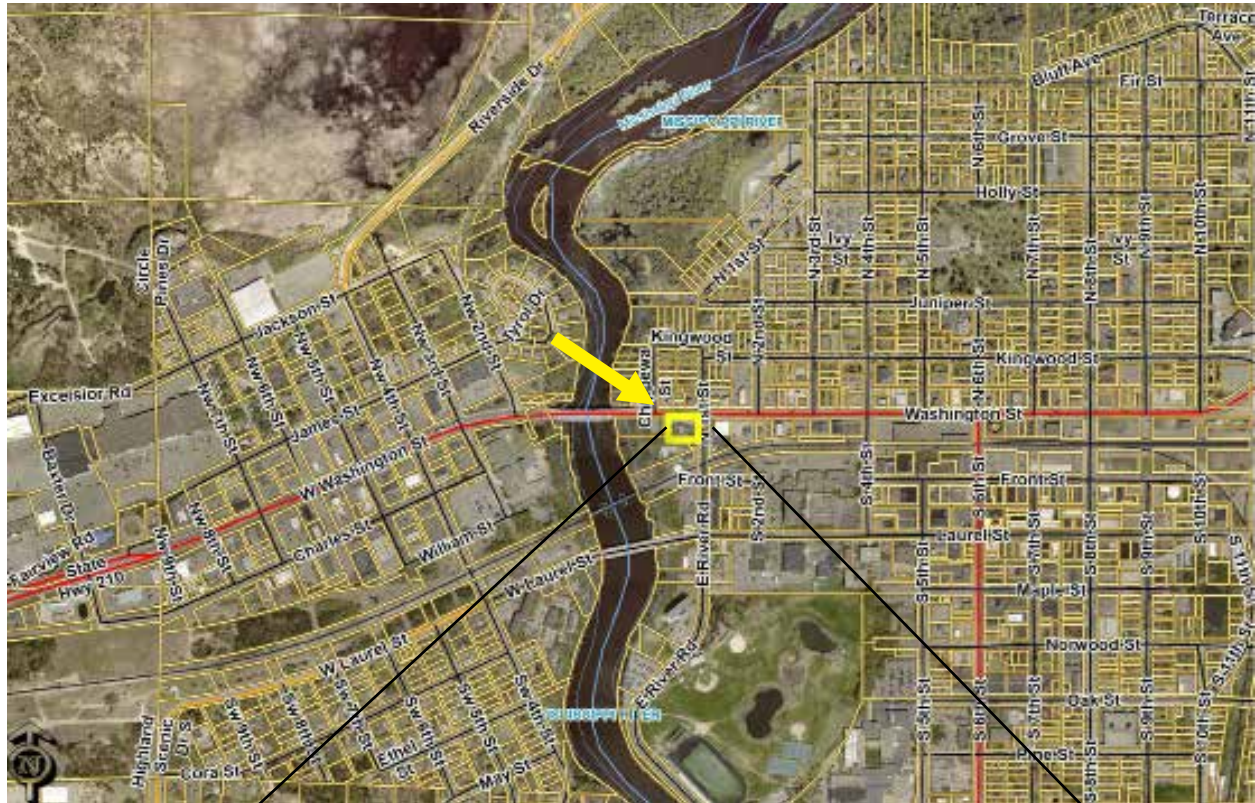


Close Converse: The above information has been obtained from the property owner or other sources that we deem reliable, however, neither the owner nor Close Converse guarantees the accuracy of such information. No part of this information may be reproduced, adapted, or transmitted without the prior written consent of Close Converse.



CLOSE CONVERSE
Commercial Real Estate | Business Brokerage

Section Aerial



Close Converse: The above information has been obtained from the property owner or other sources that we deem reliable, however, neither the owner nor Close Converse guarantees the accuracy of such information. No part of this information may be reproduced, adapted, or transmitted without the prior written consent of Close Converse.



CLOSE CONVERSE
Commercial Real Estate | Business Brokerage

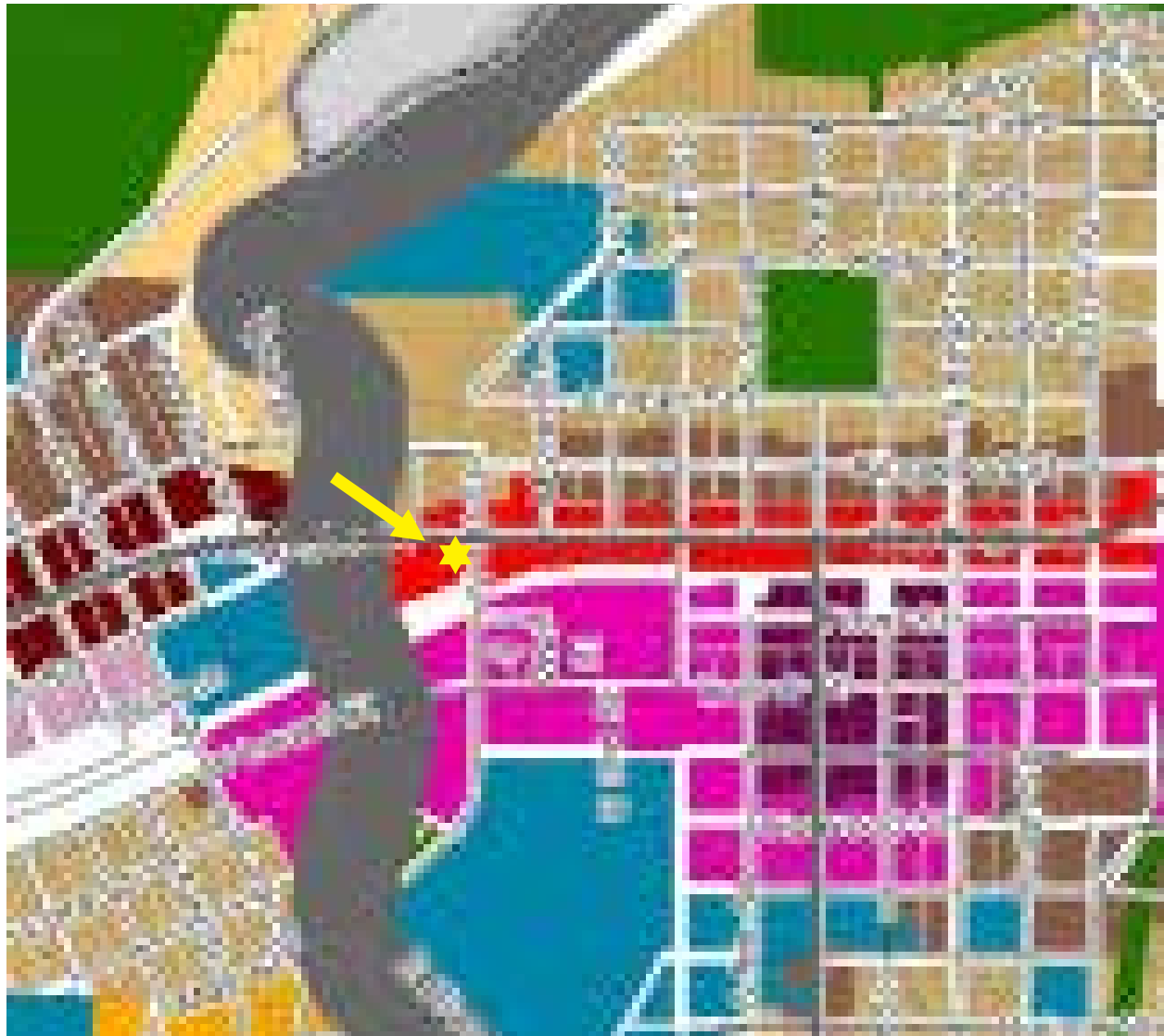
Section Map



Close Converse: The above information has been obtained from the property owner or other sources that we deem reliable, however, neither the owner nor Close Converse guarantees the accuracy of such information. No part of this information may be reproduced, adapted, or transmitted without the prior written consent of Close Converse.



CC - Commercial Corridor



Zoning Districts

- Rural Living 1 (RL-1)
- Rural Living 2 (RL-2)
- Garden Living (GL)
- Contemporary Neighborhood 1 (CN-1)
- Contemporary Neighborhood 2 (CN-2)

- General Commercial (GC)
- Commercial Corridor (CC)
- Traditional Neighborhood 1 (TN-1)
- Traditional Neighborhood 2 (TN-2)
- Town Center (TC)

- Main Street (MS)
- Makers and Employment (ME)
- General Industrial (GI)
- Public/Semi-Public (PSP)
- Park (P)

Overlay

- Brook Street Industrial Overlay (BSI-O)
- Manufactured Housing Overlay (MH-O)
- Northern Pacific Center Overlay (PUD)

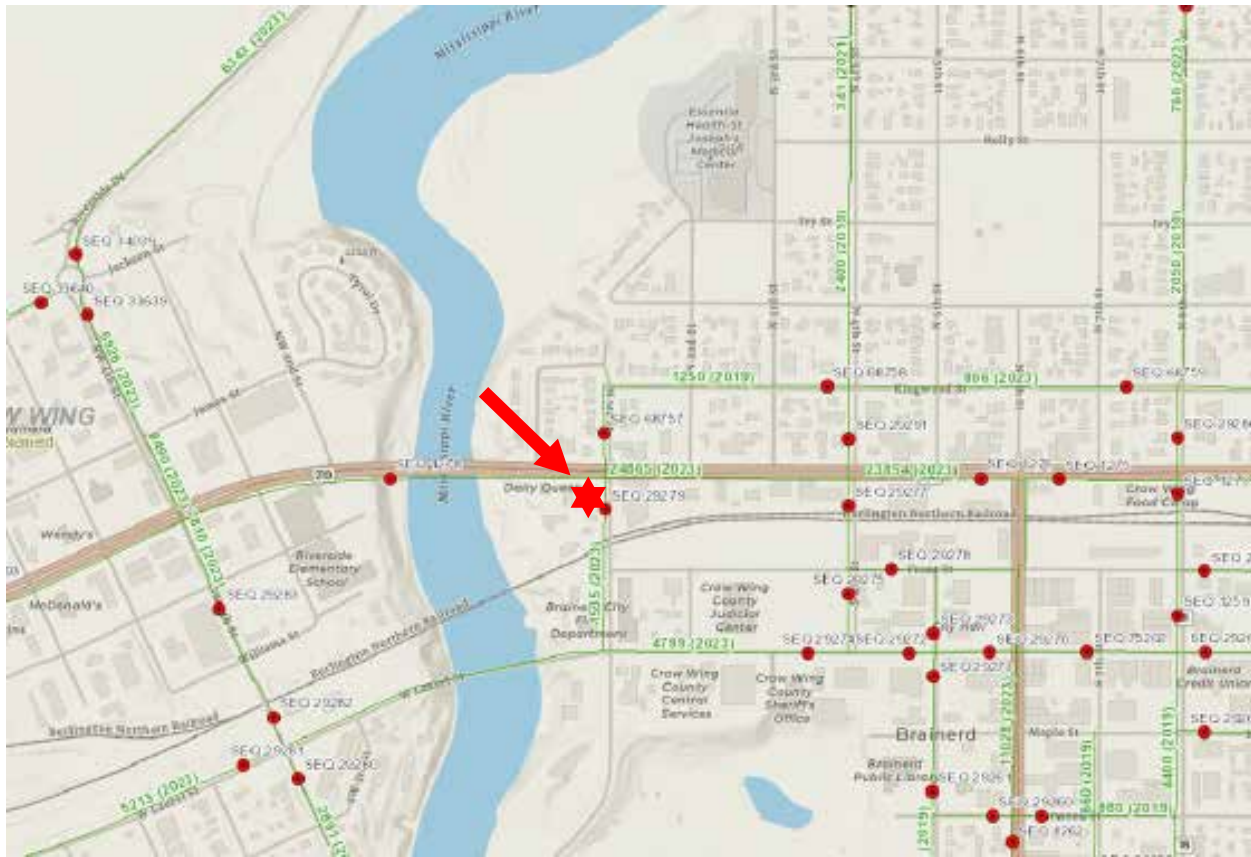
Close Converse: The above information has been obtained from the property owner or other sources that we deem reliable, however, neither the owner nor Close Converse guarantees the accuracy of such information. No part of this information may be reproduced, adapted, or transmitted without the prior written consent of Close Converse.

22 Washington Street, Brainerd, MN

Counts from MNDOT

Traffic Counts

Traffic Counts: 24,865 (2023) on Washington Street (Hwy 210), 247 (2023) on N 1st Street and 1,535 (2023) on East River Road

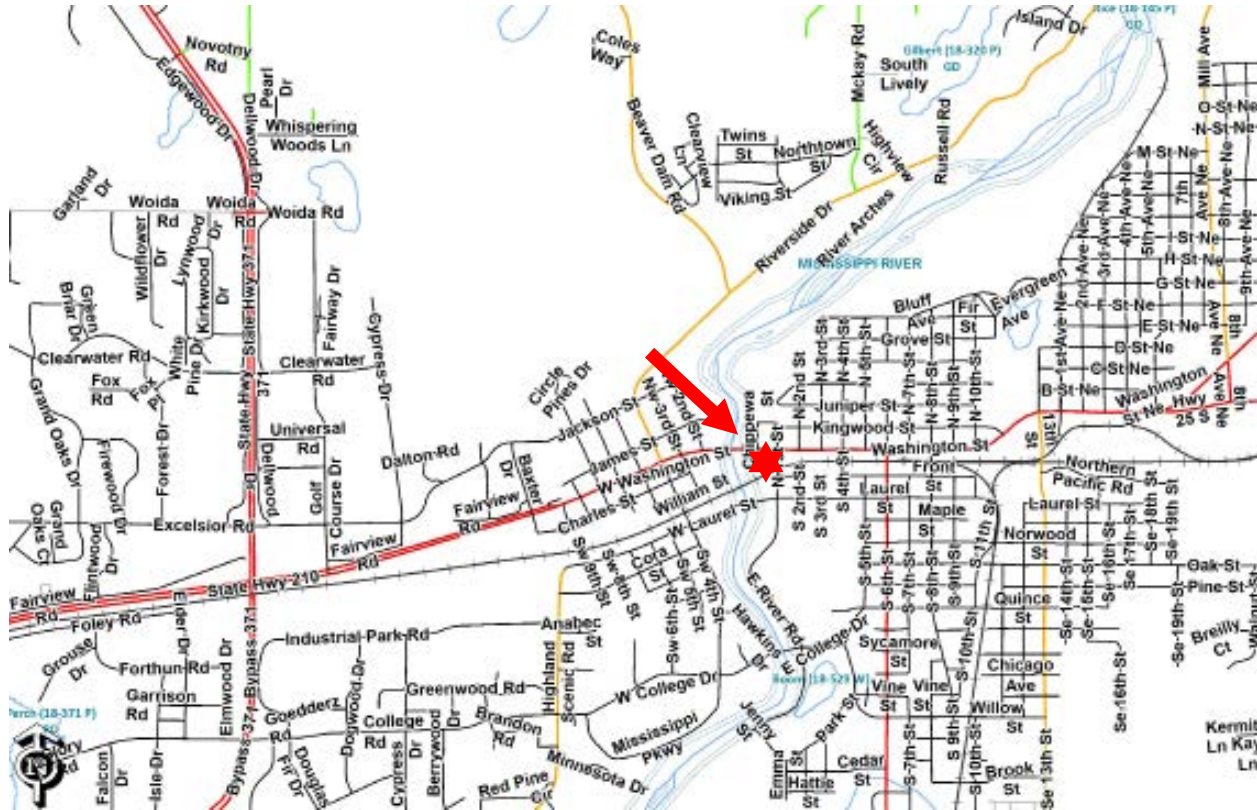


Close Converse: The above information has been obtained from the property owner or other sources that we deem reliable, however, neither the owner nor Close Converse guarantees the accuracy of such information. No part of this information may be reproduced, adapted, or transmitted without the prior written consent of Close Converse.



CLOSE CONVERSE
Commercial Real Estate | Business Brokerage

Location Map



Close Converse: The above information has been obtained from the property owner or other sources that we deem reliable, however, neither the owner nor Close Converse guarantees the accuracy of such information. No part of this information may be reproduced, adapted, or transmitted without the prior written consent of Close Converse.



Trade Area 2024 Population (Includes the following counties):

Crow Wing County	68,541
Cass County	31,282
Total Trade Area Population	99,823

2024 Population:

Brainerd	31,866
Baxter	9,043

Estimated Summer Population:

Brainerd/Baxter	200,000+
-----------------	----------

Projected Population Growth Change 2024-2029:

Crow Wing County	0.52%
Brainerd	0.38%
Baxter	1.38%

Households in 2024:

Crow Wing County	29,089
Brainerd	13,109
Baxter	3,643

2024 Median Household Income:

Crow Wing County	\$74,012
Brainerd	\$68,083
Baxter	\$76,101

Leading Employers in Crow Wing County in 2025:

- Essentia Health
- Cuyuna Regional Medical Center
- Brainerd School District
- Grandview Lodge
- Breezy Point Resort
- Ascensus
- Clow Stamping
- Crow Wing County
- Madden’s Resort
- Cragun’s Resort
- Walmart
- Ruttgers Bay Lake Resort
- Cub Foods/Super Valu (3 Stores)
- Central lakes College
- Anderson Brothers Construction
- Pequot Lakes School District
- Mills Automotive
- Bang Printing
- City of Brainerd
- Costco
- Bethany Good Samaritan
- Woodland Good Samaritan
- Crosby Ironton School District
- Minnesota Care

Leading Employers Cont.:

- Landis + Gyr
- Northstar Plating
- Nortech Systems
- Lindar
- Avantech
- Reichert Bus
- Lexington
- Growth Zone
- CTC
- Stern Companies
- MNDOT
- MNDNR
- TDS
- Graphic Packaging
- Crow Wing Power

Continued on next page.

Demographics

Brainerd Lakes Area Businesses: (To see a list of additional businesses, please go to www.explorebrainerdlakes.com)

Financial Institutions: 16+
(multiple locations not counted)

Churches: 30+
Schools: 15+
Golf Courses: 27+

Resorts:
Birch Bay
Boyd Lodge
Breezy Point Resort
Craguns
Fritz's Resort
Grand View Lodge
Gull Lake Resort
Kavanaugh's
Lost Lake Lodge
Maddens
Manhattan Beach Lodge
Quarterdeck
Ruttger's Bay Lake Lodge
Sullivans
Plus numerous others

Major Retailers:

Aldi
Anytime Fitness
Ashley Furniture
Auto Zone
Best Buy
Brother's Motorsports
Cashwise Liquor (2)
Christmas Point
Costco
Dick's Sporting Goods
Discount Tire
Dollar Tree (2)
Dollar General
Dondelinger
Dunham's Sports
East Brainerd Mall (17 Retailers)
Family Dollar
Fleet Farm
Harbor Freight
Home Depot
Home Goods
Hobby Lobby
Jiffy Lube

Major Retailers Continued:

Kohl's
Menards
Michaels
PetSmart
Planet Fitness
Super One (3)
Super Wal-Mart
Takedown Gym
Target
The Power Lodge
TJ Maxx
Ulta Beauty
Walgreens
Westgate Mall (27 Retailers)
Westside Liquor

Restaurants/Fast Food:

218 Local
371 Diner
Antler's
Applebee's
Arby's
B-Merri
Bar Harbor
Baxter's
Black Bear Lodge & Saloon
Blue Oyster
Boulder Tap House
Breezy Point Marina
Buffalo Wild Wings
Burger King
Burritos California
Caribou Coffee (4)
Char
Chick N Rice
China Garden
Chipotle
Coco Moon
Cold Stone Creamery
Cowboy's
Cragun's Legacy Grill
Cru
Culver's
Dairy Queen (3)
Domino's Pizza (3)
Dough Bros.
Dunkin Donuts (2)

Restaurants/Fast Food Continued:

Dunmire's (2)
El Tequila
Ernie's
Firehouse Subs
Five Guys
Four Seas
Grizzly's Grill & Saloon
Hardee's
Hunt 'N Shack
Ippin Ramen & Sushi
Jack's House
Jersey Mike's
Jimmy John's
KFC
Little Caesar's
Loco Express
Lucky's
Madden's Classic Grill
Manhattan Beach
Maucieri's
McDonalds (2)
Moonlite Bay
Nautical Bowls
Papa Murphy's Pizza
Perkins
Pine Peaks
Pizza Hut
Pizza Ranch
Poncho & Lefty's
Rafferty's Pizza (4)
Riverside Inn
Ruttger's
Sakura
Senor Patron
Sherwood North
Slice on Oak
Starbucks (3)
Subway (3)
Sunshine's Summer House
Taco Bell
Taco John's
The Barn
The Commander
The Pines at Grandview
Wendy's (2)
Ye Ole Wharf
Zorbaz (2)

Close Converse: The above information has been obtained from the property owner or other sources that we deem reliable, however, neither the owner nor Close Converse guarantees the accuracy of such information. No part of this information may be reproduced, adapted, or transmitted without the prior written consent of Close Converse.

22 Washington Street, Brainerd, MN

Thank You

Thank you for considering this Close - Converse opportunity

Close - Converse is pleased to present this real estate opportunity for your review. It is our intention to provide you with the breadth of information and data that will allow you to make an informed decision.

We are here to help

Please review this package and contact us with any questions you may have. We are prepared to discuss how this property meets your needs and desires. Facts, figures and background information will aid in your decision. Should you need specialized counsel in the areas of taxation, law, finance, or other areas of professional expertise, we will be happy to work with your advisor or, we can recommend competent professionals.

How to acquire this opportunity

When you have made a decision to move forward, we can help structure a proposal that covers all the complexities of a commercial real estate transaction. As seller's representatives, we know the seller's specific needs and can tailor a proposal that expresses your desires, provides appropriate contingencies for due diligence and results in a win-win transaction for all parties.

Agency and you

Generally, we are retained by sellers or landlords to represent them in the packaging and marketing of their commercial, investment or development real estate. You are encouraged to review the Minnesota disclosure form "Agency Relationships in Real Estate Transactions" which is enclosed at the end of this package. If you have questions about agency and how it relates to your search for the right property, please ask us. We will answer all your questions and review the alternatives.

Should you wish to pursue this opportunity, please acknowledge your review of "Agency Relationships" by signing, dating and returning it to us.

Close Converse: The above information has been obtained from the property owner or other sources that we deem reliable, however, neither the owner nor Close Converse guarantees the accuracy of such information. No part of this information may be reproduced, adapted, or transmitted without the prior written consent of Close Converse.

521 Charles Street, PO Box 327, Brainerd, MN 56401 | 218-828-3334 | www.closeconverse.com

Agency Disclosure

AGENCY RELATIONSHIPS IN REAL ESTATE TRANSACTIONS

1. Page 1

2. **MINNESOTA LAW REQUIRES** that early in any relationship, real estate brokers or salespersons discuss with consumers what type of agency representation or relationship they desire.⁽¹⁾ The available options are listed below. This is not a contract. This is an agency disclosure form only. If you desire representation you must enter into a written contract, according to state law (a listing contract or a buyer/tenant representation contract). Until such time as you choose to enter into a written contract for representation, you will be treated as a customer and will not receive any representation from the broker or salesperson. The broker or salesperson will be acting as a Facilitator (see paragraph IV on page two (2)), unless the broker or salesperson is representing another party, as described below.

9. **ACKNOWLEDGMENT: I/We acknowledge that I/we have been presented with the below-described options. I/We understand that until I/we have signed a representation contract, I/we am/are not represented by the broker/salesperson. I/We understand that written consent is required for a dual agency relationship.**

12. THIS IS A DISCLOSURE ONLY, NOT A CONTRACT FOR REPRESENTATION.

13. _____
 (Signature) (Date) (Signature) (Date)

14. I. **Seller's/Landlord's Broker:** A broker who lists a property, or a salesperson who is licensed to the listing broker, represents the Seller/Landlord and acts on behalf of the Seller/Landlord. A Seller's/Landlord's broker owes to the Seller/Landlord the fiduciary duties described on page two (2).⁽²⁾ The broker must also disclose to the Buyer material facts as defined in MN Statute 82.68, Subd. 3, of which the broker is aware that could adversely and significantly affect the Buyer's use or enjoyment of the property. (MN Statute 82.68, Subd. 3 does not apply to rental/lease transactions.) If a broker or salesperson working with a Buyer/Tenant as a customer is representing the Seller/Landlord, he or she must act in the Seller's/Landlord's best interest and must tell the Seller/Landlord any information disclosed to him or her, except confidential information acquired in a facilitator relationship (see paragraph IV on page two (2)). In that case, the Buyer/Tenant will not be represented and will not receive advice and counsel from the broker or salesperson.

24. II. **Buyer's/Tenant's Broker:** A Buyer/Tenant may enter into an agreement for the broker or salesperson to represent and act on behalf of the Buyer/Tenant. The broker may represent the Buyer/Tenant only, and not the Seller/Landlord, even if he or she is being paid in whole or in part by the Seller/Landlord. A Buyer's/Tenant's broker owes to the Buyer/Tenant the fiduciary duties described on page two (2).⁽²⁾ The broker must disclose to the Buyer material facts as defined in MN Statute 82.68, Subd. 3, of which the broker is aware that could adversely and significantly affect the Buyer's use or enjoyment of the property. (MN Statute 82.68, Subd. 3 does not apply to rental/lease transactions.) If a broker or salesperson working with a Seller/Landlord as a customer is representing the Buyer/Tenant, he or she must act in the Buyer's/Tenant's best interest and must tell the Buyer/Tenant any information disclosed to him or her, except confidential information acquired in a facilitator relationship (see paragraph IV on page two (2)). In that case, the Seller/Landlord will not be represented and will not receive advice and counsel from the broker or salesperson.

35. III. **Dual Agency - Broker Representing both Seller/Landlord and Buyer/Tenant:** Dual agency occurs when one broker or salesperson represents both parties to a transaction, or when two salespersons licensed to the same broker each represent a party to the transaction. Dual agency requires the informed consent of all parties, and means that the broker and salesperson owe the same duties to the Seller/Landlord and the Buyer/Tenant. This role limits the level of representation the broker and salesperson can provide, and prohibits them from acting exclusively for either party. In a dual agency, confidential information about price, terms and motivation for pursuing a transaction will be kept confidential unless one party instructs the broker or salesperson in writing to disclose specific information about him or her. Other information will be shared. Dual agents may not advocate for one party to the detriment of the other.⁽³⁾

44. Within the limitations described above, dual agents owe to both Seller/Landlord and Buyer/Tenant the fiduciary duties described below.⁽⁴⁾ Dual agents must disclose to Buyers material facts as defined in MN Statute 82.68, Subd. 3, of which the broker is aware that could adversely and significantly affect the Buyer's use or enjoyment of the property. (MN Statute 82.68, Subd. 3 does not apply to rental/lease transactions.)

48. _____ I have had the opportunity to review the "Notice Regarding Predatory Offender Information" on
 (initials) (initials)
 49. _____ page two. (2)

50. Page 2

51. IV. **Facilitator:** A broker or salesperson who performs services for a Buyer/Tenant, a Seller/Landlord or both but does not represent either in a fiduciary capacity as a Buyer's/Tenant's Broker, Seller's/Landlord's Broker or Dual Agent. **THE FACILITATOR BROKER OR SALESPERSON DOES NOT OWE ANY PARTY ANY OF THE FIDUCIARY DUTIES LISTED BELOW, EXCEPT CONFIDENTIALITY, UNLESS THOSE DUTIES ARE INCLUDED IN A WRITTEN FACILITATOR SERVICES AGREEMENT.** The facilitator broker or salesperson owes the duty of confidentiality to the party but owes no other duty to the party except those duties required by law or contained in a written facilitator services agreement, if any. In the event a facilitator broker or salesperson working with a Buyer/Tenant shows a property listed by the facilitator broker or salesperson, then the facilitator broker or salesperson must act as a Seller's/Landlord's Broker (see paragraph I on page one (1)). In the event a facilitator broker or salesperson, working with a Seller/Landlord, accepts a showing of the property by a Buyer/Tenant being represented by the facilitator broker or salesperson, then the facilitator broker or salesperson must act as a Buyer's/Tenant's Broker (see paragraph III on page one (1)).

63. ⁽¹⁾ This disclosure is required by law in any transaction involving property occupied or intended to be occupied by one to four families as their residence.

65. ⁽²⁾ The fiduciary duties mentioned above are listed below and have the following meanings:
 66. **Loyalty** - broker/salesperson will act only in client(s)' best interest.
 67. **Obedience** - broker/salesperson will carry out all client(s)' lawful instructions.
 68. **Disclosure** - broker/salesperson will disclose to client(s) all material facts of which broker/salesperson has knowledge which might reasonably affect the client(s)' use and enjoyment of the property.
 69. **Confidentiality** - broker/salesperson will keep client(s)' confidences unless required by law to disclose specific information (such as disclosure of material facts to Buyers).
 70. **Reasonable Care** - broker/salesperson will use reasonable care in performing duties as an agent.
 71. **Accounting** - broker/salesperson will account to client(s) for all client(s)' money and property received as agent.

74. ⁽³⁾ If Seller(s)/Landlord(s) elect(s) not to agree to a dual agency relationship, Seller(s)/Landlord(s) may give up the opportunity to sell/lease the property to Buyer(s)/Tenant(s) represented by the broker/salesperson. If Buyer(s)/Tenant(s) elect(s) not to agree to a dual agency relationship, Buyer(s)/Tenant(s) may give up the opportunity to purchase/lease properties listed by the broker.

78. **NOTICE REGARDING PREDATORY OFFENDER INFORMATION:** Information regarding the predatory offender registry and persons registered with the predatory offender registry under MN Statute 243.166 may be obtained by contacting the local law enforcement offices in the community where the property is located, or the Minnesota Department of Corrections at (651) 361-7200, or from the Department of Corrections Web site at www.corr.state.mn.us.

MN-AGCYDISC-2 (8/14)

Close Converse: The above information has been obtained from the property owner or other sources that we deem reliable, however, neither the owner nor Close Converse guarantees the accuracy of such information. No part of this information may be reproduced, adapted, or transmitted without the prior written consent of Close Converse.



22 Washington Street, Brainerd, MN

Contact

Office Location

521 Charles Street
Suite 201
Brainerd, MN 56401

Mailing Address

PO Box 327
Brainerd, MN 56401

Phone

218-828-3334

Fax

218-828-4330

Website

www.CloseConverse.com

Agents

Chris Close, CCIM

C: 218-831-7510

chris@closeconverse.com

Tim Miller, CCIM

C: 218-838-8772

tim@closeconverse.com

Nate Grotzke, CCIM

C: 218-838-1000

nate@closeconverse.com

Close Converse: The above information has been obtained from the property owner or other sources that we deem reliable, however, neither the owner nor Close Converse guarantees the accuracy of such information. No part of this information may be reproduced, adapted, or transmitted without the prior written consent of Close Converse.

521 Charles Street, PO Box 327, Brainerd, MN 56401 | 218-828-3334 | www.closeconverse.com